

nef | RESERVE  
KANDILLI



## **ABOUT NEF RESERVE / KENDILLI PROJECT**

A LUXURIOUS FAMILY CONCEPT PROJECT WITH MATCHLESS BOSPHORUS VIEWS  
LOCATED ON THE ASIAN SIDE OF ISTANBUL / ÜSKÜDAR REGION, THE OLD CITY  
CENTER OF ISTANBUL, SURROUNDED BY HIGH-END COMPLEXES AND NEIGHBORS.





THE PROJECT AREA IS **40.000M2**  
**29** BLOCKS TOTAL  
**406** RESIDENTIAL UNITS

TYPES :  
**2.5+1 / 3+1 / 3.5+1 / 4+1 / 5+1 DUPLEX**

**157M2 - 411M2**

EACH BLOCK **6 FLOORS** ONLY  
EACH FLOOR HAS **2 SPACIOUS APARTMENTS**

Combining Kandilli's historical characteristics with modern architecture, the project reflects a version of traditional construction that is shaped by modern solutions and is executed to perfection. Designed by The architect Emre Arolat.

The carefully selected materials, colors and textures of the interior decoration complement the bold architectural lines of the project. Two design alternatives are offered, one featuring lighter shades of mink, beige and cream alongside light tones of wood, and the other featuring gray and earth tones with darker shades of wood. To allow sunlight to touch every corner of the homes and to create spacious areas, all rooms have floor to ceiling window panels. The calm, harmonious design of the project gives it a timeless and sophisticated air. Interior Architecture Mustafa Toner.



## NEARBY :

### 5 MINUTES TO

BOSPHORUS BRIDGE

COSTAL SEA SIDE

ADILE SULTAN SARAY

CEMILE SULTAN SARAY

KENDILLI PARK

CAMLICA HILL

### 20 MINUTES TO

TAKSIM

KADIKOY

AKASYA MALL

CAPITOL MALL



# SOCIAL SERVICES



OUTDOOR & INDOOR  
SWIMMING POOL



FITNESS CENTER



SPA



SAUNA



TURKISH BATH



CINEMA ROOM



CELEBRATION ROOM



GAME ROOM



MUSIC ROOM



PRIVATE STUDIO



MINI FOOTBALL COURT



TENNIS COURT



MINI BASKETBALL COURT



24/7 MAINTENANCE  
SERVICES



nef | RESERVE  
KANDILLI



**READY TITLE DEED**



**APPROPRIATE FOR  
TURKISH CITIZENSHIP**



**NO TITLE DEED FEES**

## || DELIVERY

THE PROJECT WILL BE DELIVERED ON 2 PHASES:

1ST PHASE **AUG.2022**

2ND PHASE **AUG.2023**





nef | RESERVE  
KANDILLI



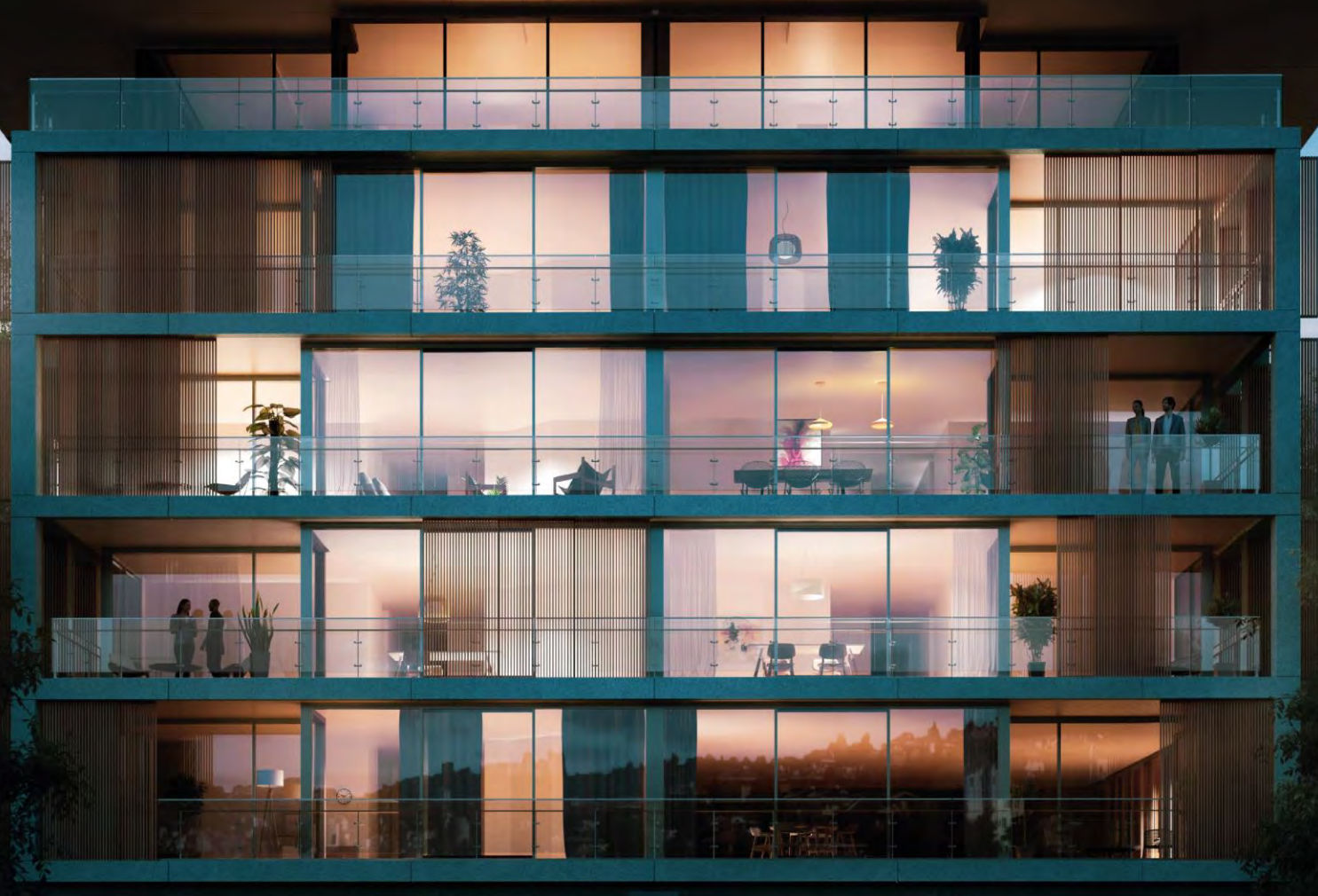
nef | RESERVE  
KANDILLI



nef | RESERVE  
KANDILLI



nef | RESERVE  
KANDILLI



nef | RESERVE  
KANDILLI

nef | RESERVE  
KANDILLI





nef | RESERVE  
KANDILLI









nef | RESERVE  
KANDILLI

